

On Stage IN NORTH CAROLINA

Your guide

to this season's exciting
array of professional
touring cultural
attractions coming
to theatres and
performing arts
centers throughout
North Carolina,
brought to you
by members of
the NC Presenters
Consortium.



NC jazz vocalist &
recording artist
Nnenna Freelon

2002-03

On Stage in North Carolina, the official calendar of touring events presented by the members of the NC Presenters Consortium, is made possible through the generous support of TIAA-CREF (corporate sponsor to NCPC), the NC Arts Council (a state agency), and members of the NC Presenters Consortium, Inc. (a not-for-profit organization).

WWW.NCPRESENTERS.ORG



Please come in

Wherever you might be in the great state of North Carolina, you are likely quite close to a curtain going up on a wonderful performance that could invigorate your spirit and replenish your soul. Don't miss that opportunity — and use this handy guide to help get you to your seat!

The Tar Heel State is blessed with a rich bounty of professional live performing arts experiences. From classical fare to bluegrass, ballet to bebop, touring Broadway musicals to riveting drama, sizzling jazz to sumptuous international music — North Carolina's performing arts venues continue to host the world's most acclaimed touring artists.

North Carolina Presenters Consortium, Inc. is our state's 200-member network comprised of not-for-profit performing arts presenting organizations and industry colleagues. Considered among the nation's foremost presenting associations, NCPC works actively in a non-competitive spirit to continually enhance the breadth, quality and affordability of professional touring attractions throughout the state. Through the invaluable assistance and support of TIAA-CREF and the North Carolina Arts Council, NCPC has published ***On Stage in North Carolina*** since 1998, and our guidebook has received accolades and thanks from persons around the country. As our constituency grows, so does our responsibility to bring you the very best — and to ensure that our visiting artists depart these borders feeling



that they've been truly welcomed by the grandest people on earth. And that's where you come in...

The 500 professional touring events listed within this guide represent only a taste of the current season's enticing array of performance opportunities scheduled throughout North Carolina. In addition to these events on tour, multitudes of top-quality events are produced by NC-based amateur and professional companies from the mountains to the coast.

An expanded, informative statewide events calendar can be found on our website at www.ncpresenters.org with links to our numerous member venues. Additionally, see our full-page ad in **Our State** magazine each month, highlighting current NCPC events occurring across NC.

Greetings from the State of the Arts. Whether you're just passing through or happen to be one of the lucky folks who gets to call it home, North Carolina's doors to the performing arts stand open and ready to welcome you. When it's live on stage, there's just nothing like it!

Scheduled attractions are subject to change. Please visit a specific venue's website or telephone the box office to confirm performance times and admission prices.

ON STAGE IN NORTH CAROLINA is the annual guide to events presented by member organizations of North Carolina Presenters Consortium, Inc., a not-for-profit organization funded, in part, through membership fees, and by TIAA-CREF and the NC Arts Council, a state agency. For more information, visit www.ncpresenters.org.



Mountain



Piedmont

Map indicates NCPC member venues

ON STAGE IN NORTH

NC Presenter Members

ALBEMARLE

STANLY COUNTY CONCERT ASSOCIATION 28
 704.982.7824

ASHEVILLE

ASHEVILLE BRAVO CONCERTS ... 19
 828.259.5544
www.ashevillebravoconcerts.org

ASHEVILLE CHAMBER MUSIC SERIES 21
 828.298.5085
www.main.nc.us/ashevillechambermusic

DIANA WORTHAM THEATRE ... 18
 828.257.4530
www.dwtheatre.com

UNC ASHEVILLE CULTURAL AND SPECIAL EVENTS 21
 828.232.5000
www.unca.edu/student_activities/cultural.htm

ATLANTIC BEACH

Coastal Jazz Society
 252.247.7778
www.coastaljazz.org

BANNER ELK

Forum at Lees-McRae College
 828.898.8748
www.lmc.edu

BLACK MOUNTAIN

Black Mountain Center for the Arts
 828.669.0930

BOONE

APPALACHIAN STATE UNIV. ... 20
 800.841.2787
www.oa.appstate.edu

Watauga County Arts Council
 828.264.1789
www.tradingco.com/artscouncil/

BREVARD

PORTER CENTER AT BREVARD COLLEGE 22
 828.884.8330
www.brevard.edu/portercenter

CARRBORO

ARTSCENTER 29
 919.929.2787
www.artscenterlive.org



es with seasons displayed within.

I CAROLINA 2002-03

CARY

TOWN OF CARY 40

919.469.4061

www.townofcary.org

CHAPEL HILL

CAROLINA UNION-UNC CH 26

919.962.1449

www.unc.edu/depts/union

CHARLOTTE

Carolinas Concert Association

704.527.6680

www.carolinasconcertassoc.com

Central Piedmont Comm. College

704.330.6374

www.cpcc.cc.nc.us

Charlotte Center City Partners

704.332.2227

www.charlottecentercity.org

CHARLOTTE FOLK SOCIETY 32

704.372.FOLK

www.folksociety.org

Johnson C. Smith University

Lyceum Committee

704.378.1295

www.jcsu.edu/lyceum.html

NC Blumenthal Performing ArtsCenter

704.372.1000

www.blumenthalcenter.org

CLAYTON

Clayton Auditorium

919.553.5002

CLINTON

SAMPSON CENTERSTAGE

SERIES 42

910.592.7200

www.sampsonexpocenter.com

DANBURY

Stokes County Arts Council

336.593.8159

DAVIDSON

Davidson College Union

704.894.2135

www.davidson.edu/administrative/union/artasers.htm

FRIENDS OF THE ARTS AT

DAVIDSON COLLEGE 26

704.894.2101

www.davidson.edu/administrative/develop/fota.html

Mountain



Piedmont

Map indicates NCPC member venues

North Carolina Present

DURHAM

CAROLINA THEATRE OF DURHAM 32
919.560.3030
www.carolinatheatre.org

DUKE UNIVERSITY INSTITUTE OF THE ARTS 29
919.684.4444
www.duke.edu/web/dia

Durham Arts Council
919.560.2787
www.durhamarts.org

ST. JOSEPH'S HISTORIC FOUNDATION INC. 38
919.683.1709
www.hayti.org

ELIZABETH CITY

COLLEGE OF THE ALBEMARLE .. 43
800.335.9050
www.albemarle.edu/acadaff/finearts

ELON

ELON UNIVERSITY 30
336.278.5610
www.elon.edu/e-net/cultural/

FAYETTEVILLE

Arts Council of Fayetteville & Cumberland County
910.323.1776
www.theartscouncil.com

FOREST CITY

Rutherford County Comm. Concert Assoc.
828.286.4181

GREENSBORO

CAROLINA THEATRE OF GREENSBORO 36
336.333.2605
www.carolinatheatre.com

Eastern Music Festival
877.833.6713
www.easternmusicfestival.com

Greensboro Symphony Society
336.335.5456
www.greensborosymphony.org

Music for a Great Space
336.852.5775

UNC GREENSBORO 38
336.334.4TIX
<http://ucls.uncg.edu>



es with seasons displayed within.

er Members, continued

GREENVILLE

EAST CAROLINA UNIVERSITY ... 43
800.ECU.ARTS
www.ecu.edu/ecuarts

HAMLET

RICHMOND COMM. COLLEGE ... 34
910.582.7950
www.richmond.cc.nc.us

HIDDENITE

**Western Art Agencies of
 North Carolina (WAANC)**
828.632.2780

HIGH POINT

HIGH POINT THEATRE 28
336.887.3001
www.ci.high-point.nc.us/dept/theatre

High Point University
336.841.4538

JEFFERSON

ASHE CO. ARTS COUNCIL 23
336.246.ARTS
www.ashecounyarts.org

KINSTON

Community Council for the Arts
252.527.2517
www.kac.iconmnet.com

KITTY HAWK

**OUTER BANKS FORUM
 FOR THE LIVELY ARTS 46**
252.202.9732
www.outerbanksforum.org

LENOIR

BROYHILL CIVIC CENTER 19
828.726.2407
www.cccti.com

Caldwell Arts Council
828.754.2486
www.conninc.com/caldart/

LEXINGTON

Arts United for Davidson County
336.249.7862
www.co.davidson.nc.us/arts

Edward C. Smith Civic Center
336.249.7875

LITTLETON

Lakeland Cultural Arts Center
252.586.3124

Mountain



Piedmont

Map indicates NCPC member venues

North Carolina Present

LOUISBURG

Louisburg College
919.497.3251
www.louisburg.edu

LUMBERTON

Carolina Civic Center
910.738.4339

MANTEO

Dare County Arts Council
252.473.5558
www.darearts.org

**ROANOKE ISLAND
FESTIVAL PARK 44**
252.475.1500
www.roanokeisland.com

MARS HILL

Mars Hill College
828.689.1114
www.mhc.edu

MOCKSVILLE

DAVIE CO. ARTS COUNCIL 34
336.751.3000
www.ncneighbors.com/1412/

MOREHEAD CITY

Carteret Arts Forum
252.247.3883

Crystal Coast Civic Center
252.2427.3883
www.crystalcoastcivicctr.com

Down East Folk Arts Society
252.728.5991
www.downeastfolkarts.org

MORGANTON

**CITY OF MORGANTON
MUNICIPAL AUDITORIUM
(CoMMA) 22**
800.939.SHOW
www.ci.morganton.nc.us

MOUNT AIRY

SURRY ARTS COUNCIL 31
800.286.6193
www.surryarts.org

MOUNT GILEAD

Mount Gilead Community
Concert Assoc.
704.563.8562
www.mgcca.com



es with seasons displayed within.

er Members, continued

ORIENTAL

PAMLICO MUSICAL SOCIETY ... 45
252.249.3231
www.pamlicomusic.org

PEMBROKE

**GIVENS PERFORMING
 ARTS CENTER 27**
800.367.0778
www.uncp.edu/gpac

PINEHURST

Classical Concert Series
910.295.1466
Pinehurst Forum
910.295.4817

RALEIGH

Friends of World Music
919.787.2798
**GREAT ARTIST SERIES OF
 THE NC SYMPHONY 33**
919.733.2750
www.ncsymphony.org
NC Museum of Art Foundation
919.839.6262
www.ncartmuseum.org

NCSU CENTER STAGE 41
919.515.1100
www.ncsu.edu/centerstage

PINECONE 37
919.990.1900
www.pinecone.org

RED SPRINGS

Red Springs Arts Council
919.843.2426

ROBBINSVILLE

**STECOAH VALLEY ARTS, CRAFTS
 & EDUCATIONAL CENTER 18**
828.479.3364
www.visitsvcenter.com

ROCKY MOUNT

DUNN CENTER 44
800.303.5097
www.dunncenter.com

**Rocky Mount/Edgecombe Comm.
 Development Corporation**
252.442.5178

SALISBURY

ROWAN CO. CONCERT ASSOC. ... 30
704.633.1474
fjw155@msn.com

Mountain



Piedmont

Map indicates NCPC member venues

North Carolina Present

SANFORD

Temple Theatre
919.774.4512

www.transoftinc.com/temple

SMITHFIELD

JOHNSTON COMM. COLLEGE ... 40
919.209.2099

www.johnstoncc.edu

SOUTHERN PINES

Arts Council of Moore County
910.692.4356

www.artscouncil-moore.org

Sunrise Preservation Group Inc.
910.692.3611

www.sunrisetheater.com

SPINDALE

ISOTHERMAL COMM. COLLEGE .. 23
828.286.9990

www.FoundationShows.org

STATESVILLE

**Greater Statesville
Chamber of Commerce**
704.878.3493

www.ci.statesville.nc.us

Iredell Concert Association
704.660.9269

SUPPLY

Brunswick Community College
910.755.7416

www.bccowa.com

SWANNANOA

**Swannanoa Chamber
Music Festival**
828.298.3325

www.ccfa.cmich.edu/scmf

WASHINGTON

Beaufort County Arts Council
252.946.2504

www.beaufortcountyartscouncil.org

**Beaufort County Community
Concert Association**
252.946.7777

WAYNESVILLE

Haywood County Arts Council
828.452.0593

www.haywoodarts.org

WENTWORTH

Rockingham Community College
336.342.4261

www.rockinghamcc.edu



es with seasons displayed within.

er Members, continued

WILKESBORO

WILKES COMM. COLLEGE 20
336.838.6260
www.walkercenteronline.org

WILMINGTON

Cape Fear Academy
910.791.0287

THALIAN HALL 45
800.523.2820
www.thalianhall.com

UNCW ARTS IN ACTION 46
800.732.3643
www.uncw.edu/stuaff/arts

WILSON

BOYKIN CENTER 42
252.291.4329

WINGATE

WINGATE UNIVERSITY 35
704.233.8300
www.wingate.edu

WINSTON-SALEM

NC Black Repertory Company
336.723.2266
www.nbtf.org

STEVENS CENTER 39
336.721.1945
www.ncarts.edu/stevens_center

WAKE FOREST UNIVERSITY 36
336.758.5757
www.wfu.edu/secrestartists

YANCEYVILLE

CASWELL COUNTY CIVIC CENTER 33
336.694.4591



www.ncpresenters.org

More events, more information
 & more great opportunities!
 You'll find direct links to almost
 all our member venues across NC!

Corporate, Professional & Performing Artist Associate Members

EBZB PRODUCTIONS

APEX, NC

919.387.4616

<http://geocities.com/ebzb>
EBZBProductions@aol.com

A production company presenting stage works of Charles Dickens, including "The Night Before Christmas Carol"

Laura Boosinger & Timmy Abell

ASHEVILLE, NC

828.285.0899

www.lauraboosinger.com lboosinger@prodigy.net
www.timmyabell.com timmy@timmyabell.com

Noted North Carolina artists appearing on the NCAC touring roster

LOYD ARTISTS

ASHEVILLE, NC

800.476.6240

www.loydartists.com info@loydartists.com

Representing artists who expand the view of the performing arts and arts education

ALKAHEST AGENCY, INC.

ATLANTA, GA

404.315.0709

www.alkahest.net ALKAgency@aol.com

Established in 1896, the Alkahest Agency represents artists and groups in a variety of performing arts disciplines

DANCING ON COMMON GROUND

ATLANTA GA

770.454.8651

www.topentertainment.com
topentertainment@topentertainment.com

High-octane celebration of the Irish experience in America, featuring 25 numbers spanning styles and periods including Irish step-dancing, country clogging and percussive tap

CARLOTA SANTANA SPANISH DANCE COMPANY

BAHAMA, NC

919.479.9940

www.flamenco-vivo.org
santana@flamenco-vivo.org

One of the nation's premiere flamenco dance ensembles, offering performances & residency work worldwide, now based in NC

VANCE ARTISTS MANAGEMENT, INC.

BOSTON, MA

617.522.0254

www.vami.com

tvance@vami.com

Theater and world music for adult, family, and young audiences, including Underground Railway Theater, One Drum World Music Ensemble, and Ricardo Frota's Sound Play

BERNSTEIN ARTISTS INC

BROOKLYN, NY

718.623.1214

www.bernsarts.com

bernsarts@aol.com

Management & agency dedicated to development and advancement of artists seeking to extend their given genres, from early music to contemporary forms

ELSIE MANAGEMENT

BROOKLYN, NY

718.638.9862

www.elsiemanager.org

info@elsiemanager.org

Representing contemporary dance and dancetheater, from chamber-sized to large-scale productions. Family programming & residency activities available

CAPITOL INT'L PRODUCTIONS

BRUNSWICK, OH

330.273.1833

www.capitolint.com

jtevis@capitolint.com

Booking agency representing a wide variety of popular artists

NC WRITERS' NETWORK

CARRBORO, NC

919.967.9540

www.ncwriters.org

mail@ncwriters.org

The nation's largest statewide literary service organization, connecting writers & readers through conferences, workshops, competitions & newsletters

ARTSOURCE MANAGEMENT LLC

CARY, NC

919.319.9274

www.artsourcemanagement.com
artsource@bellsouth.net

20 years of touring & presenting experience, providing booking & residency services in fields of modern & contemporary dance, new/world music & contemporary theatre

www.ncpresenters.org

ARMAND & BLUESOLOGY

CHAPEL HILL, NC 919.933.5016

<http://armand.iuma.com> alenchek@aol.com

R&B, blues & rock for more than 20 years with concert performances and educational programs demonstrating the history and traditions of the blues

MILBRE BURCH: THEATRE OF THE SPOKEN WORD

CHAPEL HILL, NC 919.942.7937

www.laig.com/kindcrone kindcrone@aol.com

Internationally known storyteller, award-winning recording artist and teacher

NORTH CAROLINA

YOUTH TAP ENSEMBLE

CHAPEL HILL, NC 919.967.9624

www.ncyteonline.org ncyte@mindspring.com

Depicting the origins of tap, embracing other percussive dance forms and supporting the cutting edge of tap choreography with residencies and performances worldwide

RACHEL NARULA MANAGEMENT

CHAPEL HILL, NC 919.932.9045

www.RachelNarulaManagement.com
RNarula@bellsouth.net

Representing folk artist Arthur Godfrey, John Lennon Songwriting Contest winner, and award-winning Red Herring Puppets (performances and workshops available)

SHADY GROVE BAND

CHAPEL HILL, NC 919.967.1381

cpettee@bellsouth.net

Offering top quality bluegrass family concerts and educational programs since 1981

KEITH KNIGHT/BEAR CLAW MUSIC

CHARLESTON, SC 843.762.4894

www.bearclawmusic.com
info@bearclawmusic.com

Solo 12- & 6-string guitarist, singer & bluegrass mandolinist specializing in traditional folk, ragtime and country blues

NC DANCE THEATRE

CHARLOTTE, NC 704.372.0101

www.ncdance.org dsingle@ncdance.org

The NC-based professional dance company recognized around the world for its acclaimed performance artistry, outreach and educational programs

PASTA PRODUCTIONS/ THE FETTUCINI BROTHERS

CHARLOTTE, NC 704.332.7118

afettbro@earthlink.net

Variety entertainment specialists representing the Fettucini Brothers and others

LOIS SCOTT MANAGEMENT, INC.

CLOSTER, NJ 201.768.6970

lsminc@aol.com www.Performingarts.net/LSMI

Ensembles and soloists representing classical and contemporary music, jazz, and pops

SPRINGER THEATRE ON TOUR

COLUMBUS, GA 706.324.5714

www.springeroperahouse.org
k_murray@springeroperahouse.org

The official State Theatre of the State of Georgia, offering professional national touring productions each year

BAYLIN ARTISTS MANAGEMENT

DOYLESTOWN, PA 267.880.3750

www.baylinartists.com mbaylin@baylinartists.com

Representing distinguished artists in dance, theatre, music and family entertainment

GOINGBAREFOOT INC.

DURHAM, NC 919.489.1541

www.goingbarefoot.com
stephen@goingbarefoot.com

Specializing in commemorative events, venue programming, arts project consulting & management services

HORTON SMITH MANAGEMENT

DURHAM, NC 919.682.1395

www.hortonsmithmanagement.com
hortonsmit@aol.com

The quality link to multicultural diversity and educational programming

MALLARMÉ CHAMBER PLAYERS

DURHAM, NC 919.560.2788

mallarme@mindspring.com

Innovative ensemble celebrating diversity and carving new contours in the chamber music landscape, performing nationally and presenting "Music Among Friends"

PMG ARTS MANAGEMENT

DURHAM, NC 919.419.1411

pamart@aol.com

Booking, management, and consulting services nationwide with clients including Ronald K. Brown/EVIDENCE, Philip Hamilton Group and Nia Love's Blacksmith's Daughter

SOLAZO

FLOYD, VA 540.745.7882

www.solazo.com angarae@aol.com

A rare blend of Latin folk and dance music, layered with Cuban rhythms and Andean sounds; arrangements moving fluidly from flamenco to mambo with a single song

Corporate, Professional & Performing Artist Associate Members

continued

INTERNAT'L MUSIC NETWORK

GLOUCESTER, MA 978.283.2883

www.imnworld.com jeanna@imnworld.com

A global booking agency specializing in jazz, roots and world music representing a border-crossing genre-bending roster

HAZ TWO PRODUCTIONS

GREENSBORO, NC 336.632.1697

www.lisadames.com haztwo@triad.rr.com

Representing the NC-based company and cast of "A Closer Walk with Patsy Cline"

OUR STATE MAGAZINE

GREENSBORO, NC 800.948.1409

www.ourstate.com marketing@ourstate.com

Published since 1933, North Carolina's only travel, history and folklore magazine, filled with scenic photography & lively stories

SE SYSTEMS INC.

GREENSBORO, NC 800.662.1312

www.sesystems.com rickearl@sesystems.com

Sound, lighting and creative services for performances, special events and corporate functions throughout the Southeast & US

MAGICMUSIC PRODUCTIONS

GREENVILLE, SC 864.676.9314

www.emilepandolfi.com magicmusic@infoave.net

Exclusive representation for popular pianist/comedian Emile Pandolfi

NEW FINE ARTS

GREENVILLE, NC 252.756.2402

www.newfinearts.com rodney@newfinearts.com

Representing artists with established international careers, featuring the Canadian Guitar Quartet

JOHN MAXWELL (OH MR. FAULKNER DO YOU WRITE?)

JACKSON, MS 601.981.0777

maxwell@netdoor.com

Presenting the play for solo actor based on the life of William Faulkner

TOUR RESOURCES INTERNAT'L

LAKELAND, FL 863.816.1626

www.touresourc.com
rdmuno@tampabay.rr.com

Representing fine Cuban artists in dance, music and opera

SKYLINE MUSIC

LANCASTER, NH 603.586.7171

www.skylineonline.com andrea@skylineonline.com

National booking agency representing popular artists Four Bitchin' Babes, Terrance Simien, George Winston, Tom Rush & more

PUDDINGSTONE

LENOIR, NC 828.754.8482

www.puddingstone.com
david@puddingstone.com

Seven-member musical ensemble featuring early music to contemporary styles, featuring vocals and 27 instruments, with programs for audiences of all ages

DALLAS BRASS, INC.

LEROY, MN 507.324.0040

www.dallasbrass.com shantel@dallasbrass.com

The internationally-acclaimed six-piece brass and percussion ensemble

BUFFALO AND BRANDY

LOCKPORT, NY 716.998.1418

www.ezmultimedia.com/buffaloandbrandy
buff2@myvzw.com

Combining the arts of magic, singing, comedy, drama and grand illusion into family shows for festivals, schools, community venues and more

FELLOWSHIP FOR THE PERFORMING ARTS

MORRISTOWN, NJ 973.984.3400

www.bibleonstage.org max@bibleonstage.org

Experiences in the performing arts for comforting the spirit, including the dramatic performance GENESIS and other plays



MORRISVILLE, NC 919.465.5800

www.tiaa-cref.org
pmcindoe@tiaa-cref.org

Since 1998, TIAA-CREF has generously served as official corporate sponsor of NC Presenters Consortium. With its new regional service center in Charlotte, TIAA-CREF provides a wide range of financial services to people throughout North Carolina

MOUNT AIRY CHAMBER OF COMMERCE

MOUNT AIRY, NC 800.948.0949

www.visitmayberry.com tourism@visitmayberry.com

Friendly tourism services for "Mayberry," or Mount Airy and Surry County, NC. Group tours offered

JONATHAN WENTWORTH & ASSOCIATES

MOUNT VERNON, NY 301.277.8205

mjws@jwentworth.com

Full-service artist management agency representing primarily classical musicians, soloists, chamber music, chamber orchestras, conductors, dance & theatre

CARSON HUGGINS

NAGS HEAD, NC 252.480.6684

www.earugo.com carson@earugo.com

Nashville recording artist, songwriter & entertainer. Playing American rhythm & roots music for over 35 years

CLASS ACT ENTERTAINMENT

NASHVILLE, TN 615.262.6886

www.classactentertainment.com
mike@classactentertainment.com

Representing talent in acoustic, roots, bluegrass and folk music, including Tim O'Brien, John Colman, Lynn Morris & more

ART FEGAN ENTERTAINMENT

NASHVILLE, TN 800.218.8020

artfegan@aol.com

Full service agency representing Michael Martin Murphey, Nashville Mandolin Ensemble & others

ECLECTIC DUO PIANISTS

NEW BERN, NC 252.745.3314

cn1161@coastalnet.com

Classical eclectic alphabet soup concerts/music by composers whose names begin with ABCDEF-GHIJKL

ARTHUR SHAFMAN INTL. LTD.

NEW YORK, NY 212.799.4814

www.PerformingArts.net/Shafman
ashafman@aol.com

From Imago to Sandra Reaves-Phillips, representing the finest in dance, theatre, family programming and special attractions

BALLET FOR YOUNG AUDIENCES

NEW YORK, NY 212.662.4628

www.byany.org byampltd@aol.com

Classic story ballet, fully narrated, including Beauty and the Beast, Zorro, The Nutcracker and others

BERNARD SCHMIDT PRODUCTIONS

NEW YORK, NY 212.307.5046

www.bernardschmidtproductions.com
bschmidt@aol.com

BSP presents and promotes performing arts groups from West Africa and around the world

COLUMBIA ARTISTS MANAGEMENT INC.

NEW YORK, NY 212.841.9503

dneway@cami.com

The creative source for the performing arts, specializing in the management of classical music and touring attractions

GARDNER ARTS NETWORK

NEW YORK, NY 212.496.9121

www.napama.org/gardner.htm
gardnerart@aol.com

Booking management specializing in dance and programs for family/young audiences

GURTMAN & MURTHA ASSOCIATES

NEW YORK, NY 212.967.7350

www.gurtmanandmurtha.com
jmurtha457@aol.com

Long-standing service in artist management and representation for artists including Judy Collins and many others

ICM ARTISTS LTD

NEW YORK, NY 212.556.6823

www.icmtalent.com mcollins@icmtalent.com

Classical instrumentalist, vocalists & conductors, choral ensembles, classical & contemporary world music and dance, theatre, opera and special attractions

ROBERT GEWALD MANAGEMENT, INC.

NEW YORK, NY 212.753.0450

robertgewald@hotmail.com

Representing a variety of artists and attractions in all fields, including theatre, dance, folk music, jazz & classical music

THEATREWORKSUSA

NEW YORK, NY 212.647.1100

www.theatreworksusa.org
info@theatreworksusa.org

Professional theatre for young and family audiences & recipient of distinguished artistic, educational and service awards, with annual audience reaching 5 million

SIEGEL ARTIST MANAGEMENT

PALATKA, FL 904.325.8080

www.siegelartist.com jtsam@gbso.net

Expansive roster including dance, pops, jazz, world music, soloists and special attractions

Corporate, Professional & Performing Artist Associate Members

continued

BRITTON MANAGEMENT PHILADELPHIA, PA

www.gobritton.com brittonmgt2@aol.com
Integrity at the intersection of art and commerce

RIVER CITY BRASS BAND PITTSBURGH, PA 800.292.7222

www.rcbb.com bookings@rcbb.com
29-member brass & percussion ensemble, the only year-round professional concert band in the US, with radio broadcasts heard in more than 80 markets

GREATER RALEIGH CONVENTION & VISITORS BUREAU RALEIGH, NC 800.849.8499

www.raleighcvb.org visit@raleighcvb.org
Providing comprehensive visitor and convention services for Raleigh & Wake County, NC



NORTH CAROLINA ARTS COUNCIL

RALEIGH, NC 919.733.2111

www.ncarts.org

Providing funding and professional support to organizations which offer arts programs in North Carolina

NORTH CAROLINA SYMPHONY RALEIGH, NC 919.733.2750, x222

www.ncsymphony.org
rmaddrey@ncsymphony.org

Founded in 1932, the NC Symphony performs more than 180 concerts annually, appearing in a wide variety of settings throughout NC

RICHMOND BALLET RICHMOND, VA 804.344.0906

www.richmondballet.com
Bbonda@richmondballet.com

Offers mixed repertory and full-length classic ballet performances, as well as educational residencies and master classes

POETRY IN MOTION ROCHESTER, NY 888.860.2780

www.poetinmo.com poetinmo@aol.com
Offering residencies and performances of the spoken word by nationally-recognized artists including Roscoe Lee Browne, Christine Lavin, Anthony Zerbe & more

EYE FOR TALENT SAN FRANCISCO, CA 650.595.2274

www.eyefortalent.com bill@eyefortalent.com
Representing a broad range of World Music including African, Brazilian, French, Cape Verdean, Qawwali & Gaelic

SUZANNE AND JIM SAN RAFAEL, CA 410.263.2931

www.internetfla.com/suzanneandjim
snj@internetfla.com

Finders & keepers of American roots music performed on traditional acoustic instruments

AMERICAS MUSICWORKS SOMERVILLE, MA 888.887.7169

www.americasmusicworks.com
delamotte-amw@attbi.com

Award-winning chamber music and jazz ensembles, concerts and creative residencies; programs and world-class performance to build and energize audiences

BROADWAY CENTER STAGE SOUTH ORANGE, NJ 973.378.3244

www.broadwaycenterstage.com
squaredusa@aol.com

A duo of Broadway stars capturing the most memorable musical moments and highlights of the Broadway stage

PRODUCERS INC TAMPA, FL 813.988.8333

www.producersinc.com steve@producersinc.com
A large and varied roster including all of the major big bands, nostalgia, jazz, folk and quality Irish attractions

ROBIN SPIELBERG UPPER MONTCLAIR, NJ 973.783.6278

www.robinspielberg.com info@spobsmusic.com
Nationally acclaimed pianist/composer combines storytelling with heartfelt performance. Artist Spokesperson for Amer. Music Therapy Assoc. Residencies & outreach programs

www.ncpresenters.org

JON ENGLAND VELVET PIANO
WILMINGTON, NC 910.392.5785

www.jonengland.com
velvetpiano@hotmail.com

Jon England's "Piano Orchestral Pops Show" is a quintessentially English, stylistically and melodiously diverse, highly entertaining evening of hits and classics

WORDSWRIGHT COMMUNICATIONS
WILMINGTON, NC 910.452.6345

www.wordwrightcomm.com
mbyrd58@earthlink.net

Artful media and design, including production of ON STAGE IN NORTH CAROLINA, season brochures and playbills for performing arts venues statewide

SOUND WAVE AUDIO, INC.
WILMINGTON, NC 910.762.8190

www.soundwaveaudio.com
soundwaveaudio@worldnet.att.net

Concert sound, lighting, staging and backline services since 1987

ALBAN ELVED DANCE COMPANY
WINSTON-SALEM, NC 336.945.6627

www.albanelved.com albanelved@earthlink.net
Combining dance with new technologies, film/video, visual art, aerial work or live music. Touring nationally & internationally

Associate Presenter Members

**BARTLETT PERFORMING ARTS
& CONFERENCE CENTER**

BARTLETT, TN 901.385.6440
www.bpacc.org

**PARAMOUNT THEATRE
FOR THE ARTS**

BRISTOL, TN-VA 423.968.2508
www.theparamountcenter.com

REYNOLDS HOMESTEAD

CRITZ, VA 276.694.7181

**DANVILLE AREA ASSOCIATION
FOR THE ARTS & HUMANITIES**

DANVILLE, VA 804.792.6965

DANVILLE CONCERT ASSOCIATION

DANVILLE, VA 804.797.3978

www.danriverartalliance.com

**AVERETT COLLEGE
CONCERT-LECTURE SERIES**

DANVILLE, VA 804.791.5621
www.averett.edu

SELF FAMILY ARTS CENTER

HILTON HEAD, SC 843.686.3945
www.artscenter-hhi.org

**RAPPAHANNOCK
FOUNDATION FOR THE ARTS**

KILMARNOCK, VA 804.435.0292

**PELLISSIPPI STATE
PERFORMING ARTS CENTER**

KNOXVILLE, TN 865.694.6667
www.pstcc.edu/arts

PIEDMONT ARTS ASSOCIATION

MARTINSVILLE, VA 540.632.3221

www.piedmontarts.org

**VIRGINIA COMMISSION
FOR THE ARTS**

RICHMOND, VA 804.225.3132
www.arts.state.va.us

RIVERPARK CENTER

OWENSBORO, KY 270.687.2770
www.riverparkcenter.org

USC-SPARTANBURG

SPARTANBURG, SC 864.503.5939
www.uscsconcertseries.edu

STAUNTON PERF. ARTS CENTER

STAUNTON, VA 540.885.3211

www.stauntonperformingarts.org

**TULLAHOMA SOUTH JACKSON
CIVIC ASSOCIATION**

TULLAHOMA, TN 931.455.5321
sojack@midtnn.net

**SOUTH CAROLINA
PRESENTERS NETWORK**

WALTERBORO, SC 843.549.1922
www.scpn.org

WAYNE THEATRE ALLIANCE

WAYNE, VA 540.943.1281
www.waynetheatre.org

Diana Wortham Theatre

at Pack Place

2 South Pack Square, Asheville, NC

828-257-4530

www.dwththeatre.com



Tue, Sep 24 Dougie MacLean

Wed, Oct 2 Janis Ian

Fri-Sat NC Shakespeare
Oct 11-12 Festival

Wed, Oct 16 Jason Graae

Tue, Nov 19 An Evening with Groucho

Sat, Jan 18 Peter Cincotti

Sat, Feb 1 Christine Lavin

Fri-Sat Aquila Theatre Company,
Feb 7-8 The Importance of Being Earnest

Sun, Feb 16 MOMIX

Fri, Feb 21 Karan Casey w/ Vallely Brothers

Fri-Sat, Feb 28-Mar 1 Koresh Dance Company

Thu, Mar 13 Habana Sax

Sat, Mar 15 Doc Watson
& David Holt

Thu, Mar 27 Lunasa

Tue-Wed, Apr 15-16 Ailey II

Fri, Apr 25 Flook

Tue, May 6 The Marvelettes

Fri, May 23 Liz Carrol & John Doyle



Christine Lavin



Doc Watson



The Marvelettes



MOMIX

Stecoah Valley Arts, Crafts and Educational Center, Inc.

Stecoah Valley Center

121 Schoolhouse Road, Robbinsville, NC

828-479-3364

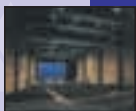
www.visitSVCenter.com • info@visitSVCenter.com

4th Annual Mountain Music Championship on June 28th begins a summer of great mountain music and entertainment for the entire family. Enjoy "An Appalachian Evening" of authentic old-time string band, bluegrass and mountain music by award-winning artists every Saturday evening in July and August. Visit our website for complete schedule of events.



Broyhill Civic Center

J. E. Broyhill Civic Center
1913 Hickory Blvd SE, Lenoir, NC



828-726-2407

www.broyhillcenter.com • dbriggs@cccti.edu

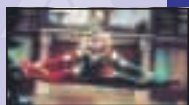
- Sat, Sep 21 Del McCoury
- Sat, Oct 12 Boots Randolph
- Mon, Oct 14 USAF Band
- Thu, Oct 24 Scott Ainslie & Glenis Redmond
- Sat, Nov 2 Illrd Tyme Out
- Tue, Nov 19 Swing
- Sat, Nov 23 Nutcracker
- Fri, Dec 6 Roy Clark Christmas
- Fri, Jan 10 Tim O'Brien
- Tue, Jan 21 Dr. Elliot Engel
- Fri, Feb 7 Glenn Miller Orchestra
- Fri, Feb 14 Singing Sweethearts
- Tue, Feb 25 Koresh Dance Ensemble
- Sat, Mar 15 Mountain Heart
- Sat, Mar 29 Caldwell Musicians Showcase
- Sat, Apr 12 Henri's Notions
- Sat, May 10 Copacabana



Boots Randolph



Roy Clark



The Nutcracker

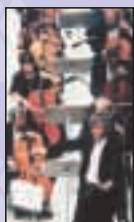
Asheville Bravo Concerts

Thomas Wolfe Auditorium,
Asheville Civic Center
87 Haywood Street, Asheville, NC

828-259-5544

www.ashevillebravoconcerts.org
bravo@buncombe.main.nc.us

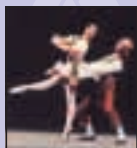
- Sun, Sep 29 Quartetto Gelato
- Thu, Oct 24 Shanghai Ballet, Coppelia
- Fri Jan 24 London City Opera, Madame Butterfly
- Thu Feb 20 Hungarian National Philharmonic Orchestra
- Fri Mar 7 Band of the Grenadier Guards, Scots Highlanders
- Fri, Apr 4 I Musici de Montreal



Hungarian National Philharmonic



Band of the Grenadier Guards



Shanghai Ballet

www.ncpresenters.org





Appalachian State University

Performing Arts Series - Farthing Auditorium
733 Rivers Street, Boone, NC

800-841-ARTS (2787)

www.oca.appstate.edu • boxoffice@appstate.edu



Keb' Mo'

Fri, Oct 11 Keb' Mo'
Tue, Oct 29 Shanghai Ballet, Coppelia
Tue, Nov 19 Eroica Trio
Tue, Dec 3 Cherish the Ladies,
Holiday Concert
Thu, Jan 23 London City Opera,
Madama Butterfly



London City Opera



Cherish the Ladies

Fri, Jan 31 Rennie Harris Puremovement
Tue, Feb 18 MOMIX
Mon Mar 24 Montanta Repertory Theatre,
The Miracle Worker
Mon, Mar 31 Rhythm in Shoes with
the Red Clay Ramblers
Thu, Apr 10 Lincoln Center Jazz Orchestra
with Wynton Marsalis

Wilkes Community College

John A. Walker
Community Center

1328 S. Collegiate Drive, Wilkesboro, NC

336-838-6260

www.walkercenteronline.org • grayk@wilkes.cc.nc.us



Lou Rawls

Sat, Aug 10 Eddie Miles, Salute to Elvis
Sat, Oct 19 Live From Las Vegas:
Legends in Concert
Fri, Nov 15 Percy Sledge
Fri, Nov 22 Donna the Buffalo
Fri, Jan 10 The Kingdom Heirs
Sat, Jan 11 Hypnomania starring Travis Fox
Fri, Jan 17 Jerry Douglas
Sat, Feb 8 The Glenn Miller Orchestra
Fri, Feb 28 Gold City
Sat, Mar 1 Doc Watson
& Friends



Percy Sledge

Sat, Mar 8 Lou Rawls
Fri, Mar 14 The Inspirations
Sat, Apr 5 Don Williams
Thu-Sun, Apr 24-27 MerleFest 2003
Sat, May 3 Herman's
Hermits & the
Buckingham



Herman's Hermits



The Buckingham

www.ncpresenters.org



UNC Asheville Cultural and Special Events

Lipinsky Auditorium, UNC-A
One University Heights, Asheville, NC

*Diana Wortham Theatre at Pack Place
2 South Pack Square, Downtown Asheville

828-232-5000

www.unca.edu/student_activities/cultural.htm

3 EVENTS CELEBRATING THE BLACK MTN COLLEGE LEGACY IN ARTS & EDUCATION

- Wed, Sep 18 John Cobb
Fri, Sep 20 Tony Conrad
Sat, Sep 21 Pauline Oliveros



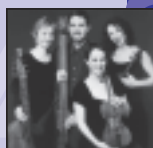
Chucho Valdes

CULTURAL AND SPECIAL EVENTS SERIES

African American Dance Ensemble



- Sat, Oct 5 Chucho Valdes Quartet
Fri, Nov 22 Chatham Baroque
Fri, Feb 7 African American Dance Ensemble
(Presented by the YMI Cultural Center, Inc.)



Chatham Baroque

- Tue Mar 25 David Krakauer and Klezmer Madness!

David Krakauer

- Tue-Wed, Apr 15-16 Ailey II*



21ST ANNUAL SUMMER CONCERTS ON THE QUAD 2003

Free family entertainment June 2 – July 14 at 7 pm
Co-sponsored with City of Asheville Parks and Recreation

Asheville Chamber Music Series

Unitarian-Universalist Church
1 Edwin Place, Asheville, NC

828-298-5085

www.main.nc.us/ashevillechambermusic
marybarth@aol.com

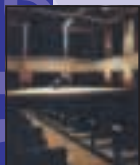
- Fri, Oct 4 Zephyros Wind Quintet
Fri, Nov 1 Artis String Quartet
Fri, Jan 31 Amadeus Trio
Fri, Feb 28 New York Chamber Soloists
Fri, Mar 21 Ying String Quartet
Sat, Apr 5 Red Priest



Red Priest

www.ncrepresenters.org





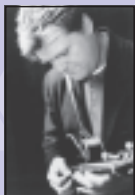
Porter Center for Performing Arts

Brevard College
400 North Broad Street, Brevard, NC

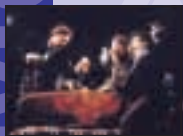
828-884-8330

www.brevard.edu/PorterCenter • boxoffice@brevard.edu

- Fri, Sep 13 Ricky Skaggs
- Thu, Oct 10 North Carolina Symphony
- Fri, Nov 8 Stanislavsky Opera, La Boheme



Ricky Skaggs



Stanislavsky Opera

- Thu Nov 14 Turtle Island String Quartet with the Ying Quartet

- Sun, Nov 24 William Bolcom and Joan Morris



Afro-Cuban All Stars

- Tue, Dec 10 The Tallis Scholars
- Sat, Feb 15 Big Band Dance Party



Eileen Ivers

- Thu, Mar 6 Chatham Baroque
- Wed, Mar 12 Preservation Hall Jazz Band

- Thu, Mar 20 Eileen Ivers

- Sat, Apr 5 Ethos Percussion Group

- Fri, Apr 11 Afro-Cuban All Stars

COMMA

City of Morganton Municipal Auditorium
401 S. College Street, Morganton, NC

828-433-SHOW • 800-939-SHOW

www.ci.morganton.nc.us • comma@ci.morganton.nc.us

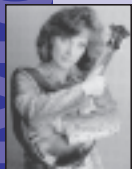


- Sat, Aug 24 The Lettermen
- Fri, Sep 27 Cecil B. DeMille
- Sat, Sep 28 An Evening with Mark Twain



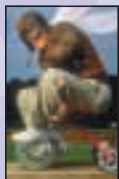
The Marvelettes

- Fri, Oct 12 My Way, Sinatra Tribute
- Sun, Oct 20 Mike Cross & The Carolina Pops
- Fri, Nov 15 Count Basie Orchestra
- Fri, Dec 13 Emile Pandolfi at Christmas



Rhonda Vincent

- Tue, Jan 7 George M
- Fri, Feb 14 Rhonda Vincent
- Wed, Feb 19 South Pacific
- Sat, Mar 1 Avner The Eccentric
- Sat, Mar 22 The Miracle Worker
- Wed, Apr 9 Cirque: Dream It Live
- Sat, May 3 The Marvelettes



Mike Cross

www.ncpresenters.org



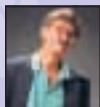
The Foundation Isothermal Community College



Frank & Mabel West Auditorium
286 ICC Loop Rd, Hwy 74A Bypass, Spindale, NC

828-286-9990

www.FoundationShows.org



*A Tribute to
Lewis Grizzard*

MAINSTAGE SERIES

Sat, Sep 14 The Del McCoury Band

Sat, Oct 12 Alison Brown Quartet

Sat, Oct 26 1964... The Tribute

Sat, Nov 23 Millennium Vaudeville

Fri, Jan 24 A Tribute to Lewis Grizzard

Fri, Feb 7 Ain't Got Long To Stay Here:
Tribute to Martin Luther King, Jr.

Fri, Feb 14 Nnenna Freelon

Fri, Mar 7 John Cowan Band with
Vassar Clements

Sat, Apr 12 Don Williams



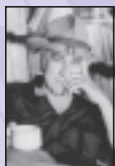
*The Del
McCoury Band*



*Nnenna
Freelon*



1964



Don Williams

CHILDREN'S SERIES

Mon Sarah, Plain and Tall
Nov 18 (2 performances)

Mon Are You My Mother?
Nov 25 (2 performances)

Tue I Never Saw Another
Feb 18 Butterfly (2 performances)

Thu Charlotte's Web
Apr 17 (2 performances)



*Alison
Brown*

Ashe County Arts Council

Ashe Arts Center
303 School Avenue, West Jefferson, NC

336-246-ARTS

www.ashecountyarts.org • jlsharts@skybest.com

Sat, Nov 9 Puddingstone

Fri, Jan 24 Transactors Improv

Fri, Feb 7 Dead Poets

Fri, Apr 11 Chatham Baroque



*Chatham
Baroque*



*Transactors
Improv*

www.ncrepresenters.org





*Managing money for people
with other things to think about.™*

RETIREMENT | INSURANCE | MUTUAL FUNDS | COLLEGE

TIAA-CREF provides financial services to over two million people nationwide. TIAA-CREF Individual distribute securities products. For more information, call (800) 842-2733, ext. 5509, for prospectuses. Association College Retirement Equities Fund (TIAA-CREF), 730 Third Avenue, New York, NY 10017

**43 days on the road.
2 shows a day.
49,321 cheering fans.**

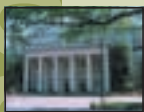
**TIAA-CREF salutes NC Presenters
on another outstanding season.**

For years, the people of TIAA-CREF have admired the talent and dedication of everyone involved with the North Carolina Presenters Consortium. We're privileged to sponsor NC Presenters...and reaffirm our commitment to the state and its unmatched vitality.

TIAA-CREF.org (800) 842-2776

SAVINGS | TRUSTS | INVESTMENT MANAGEMENT

and Institutional Services, Inc. and Teachers Personal Investors Services, Inc.
Read them carefully before investing. © 2002 Teachers Insurance and Annuity



The Carolina Union Performing Arts Series

Chapel Hill, NC

919-962-1449

www.performingartsseries.unc.edu

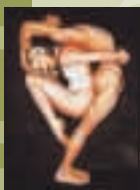
performingartsseries@unc.edu

THE PERFORMING ARTS SERIES



Chucho Valdés

- Fri, Oct 4 Chucho Valdés
- Fri, Oct 25 Apollo Theater Amateur Night
- Fri, Jan 31 NY Gilbert & Sullivan Players,
Pirates of Penzance



Pilobolus Too

- Fri, Feb 28 Charlie Haden's Quartet West
- Sat, Mar 22 Pilobolus Too
- Sat, Apr 5 Beaux Arts Trio
- Thu-Fri Cirque:
Apr 10-11 Dream It Live



Beaux Arts Trio

IN RESIDENCE

- Sun-Mon, Jan 26-27 Rennie Harris Puremovement
- Mon-Sat, Mar 17-22 Pilobolus Too



Cirque



Rennie Harris Puremovement

Friends of the Arts at Davidson

Duke Family Performance Hall,
Knobloch Campus Center
Davidson, NC

704-894-2135

www.davidson.edu/administrative/develop/fota.html
shmalushizky@davidson.edu

- Thu, Sep 26 Janice Martin, violinist
- Mon, Nov 11 Elizabeth Ransom & Joseph
Pecoraro, flute
& guitar duo
- Tue, Feb 18 Maxim Philippov,
pianist
- Sun, Mar 30 Alexander
String Quartet



Maxim Philippov

UNC-Pembroke

Givens Performing Arts Center
1 University Drive, Pembroke, NC



910-521-6361 • 800-367-0778

www.uncp.edu/gpac • david.thaggard@uncp.edu

BROADWAY & MORE SERIES

- Sat, Sep 21 State Fair
Tue, Oct 29 Lorna Luft: Songs My Mother Taught Me
Thu, Nov 7 Robert Mirabal
Mon, Nov 18 Swing
Thu, Dec 5 A Wonderful Life
Mon, Feb 3 Barry Manilow's Copacabana
Wed, Mar 19 The Miracle Worker



Robert Mirabal



NOSTALGIA CONCERT SERIES

- Sat, Oct 5 Rita Coolidge
Tue, Dec 3 Glenn Campbell
Fri, Feb 21 Mary Wilson of the Supremes
Fri, May 2 Herman's Hermits & The Buckingham



Mary Wilson

SPECIAL EVENTS

- Sat, Jan 25 Rent
Fri, Feb 28 Cinderella



Visit North Carolina, "The State of the Arts"



Visit the North Carolina Arts Council at www.ncarts.org for a wealth of information about arts and cultural opportunities and summer arts festivals and events.

For an array of NC tourism services, go to www.visitnc.com or call 1.800.VISITNC

www.ncpresenters.org



High Point Theatre

220 E. Commerce Avenue, High Point, NC

336-887-3001

www.ci.high-point.nc.us/dept/theatre
patricia.davis@ci.high-point.nc.us



Battlefield Band

Aug 16 through Oct 5 NC Shakespeare Festival (in repertory), *Much Ado About Nothing*, *Macbeth*, *The Tempest*
Fri, Nov 1 Rhonda Vincent
Tue, Nov 19 Battlefield Band
Dec 5-15 NC Shakespeare Festival, *A Christmas Carol*



Rhonda Vincent

Sun, Dec 8 Nicholas Nickleby
Sat, Jan 25 Sam Bush
Sun, Feb 16 *Porgy and Bess*
Fri, Feb 21 Noah Paley
Thu, Mar 13 Comedy Pet Theatre
Fri, Mar 28 Christine Lavin
Fri, May 9 The Marvelettes



Comedy Pet Theatre



Sam Bush



The Marvelettes

Stanly County Concert Association

Stanly County Agri-Civic Center
26032-B Newt Road, Albemarle, NC

704-986-3666

www.co.stanly.nc.us • tharris@co.stanly.nc.us

Sun, Oct 13 Boots Randolph
Sat, Nov 2 Shangri-La Chinese Acrobats
Sat, Nov 23 Bel Canto Singers
Sat, Feb 1 Carolina Brass
Sat, Mar 15 Preservation Hall Jazz Band



Boots Randolph



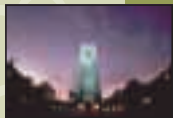
Shangri-La Chinese Acrobats



Preservation Hall Jazz Band

Duke University Institute of the Arts

Theatres & Concert Halls
across Duke Campus



919-684-4444

www.tickets.duke.edu • www.duke.edu/web/dia

- Sat, Sep 21 Kronos Quartet
- Tue, Sep 24 Parsons Dance Company
- Sun, Sep 29 Master Dancers of Bali
- Sun, Oct 6 Orpheus Chamber
Orchestra w/ Richard
Goode, piano
- Thu, Oct 24 Quraishi, Music of
Afghanistan
- Sun, Nov 10 Anoushka Shankar
- Wed, Nov 13 David Daniels,
contertenor
- Fri, Jan 24 Blind Boys of Alabama
- Sat, Jan 25 Tokyo String Quartet
- Fri, Feb 28 Gidon Kremer, violin
- Sat, Mar 1 Habana Sax de Cuba
- Tue
Mar 18 Lucy Guerin Dance
Company of Australia
- Thu
Mar 20 American Repertory
Dance Company
- Thu
Apr 17 Richard Stoltzman,
clarinet & Emanuel Ax, piano



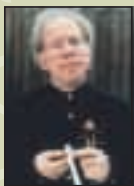
*Master Dancers
of Bali*



Anoushka Shankar



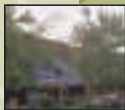
*Parsons Dance
Company*



Gidon Kremer

The ArtsCenter

Earl Wynn Theater
300-G East Main Street, Carrboro, NC



919-929-2787

www.artscenterlive.org • info@artscenterlive.org

- Sat, Sep 28 Bluegrass Experience
- Sat, Oct 19 Iona
- Sat, Nov 2 Steep Canyon Rangers
& The Grass Cats



Steep Canyon Rangers



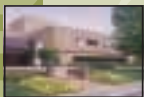
Bluegrass Experience

www.ncpresenters.org



Elon University

Elon University/Faith Rockefeller
Model Center For The Arts
Williamson Avenue, Elon, NC



336-278-5610

www.elon.edu/e-net/cultural/



Crasdent

Mon, Sep 23 The Shanghai Ballet

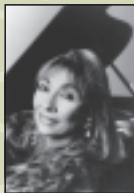
Tue, Oct 1 The Chestnut
Brass Company

Tue, Oct 8 Crasdent

Tue, Oct 22 Ruth Laredo, piano

Tue, Feb 18 Street Sounds

Thu, Feb 27 Koresh Dance
Company



Ruth Laredo

Tue, Mar 18 Montana Repertory
Theatre, The Miracle Worker

Tue, Apr 1 John & Richard Contiguglia,
four-hand piano

Thu, Apr 10 Chatham Baroque



*Koresh Dance
Company*



Chestnut Brass Company

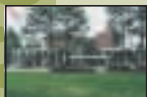


Shanghai Ballet

Rowan County Concert Association

Robertson College-Community
Center at Catawba College

2300 West Innes Street, Salisbury, NC



704-633-1474

fjw155@msn.com

Sun, Sep 8 The Dorsey Brothers Orchestra

Sun, Oct 6 Manhattan Rhythm Kings

Sun, Oct 27 Ballet Gran Folklorico de Mexico

Sun, Jan 12 Emile Pandolfi in Concert

Sat, May 3 Steely Pan Steel Band



Dorsey Brothers



Emile Pandolfi



Manhattan Rhythm Kings

Surry Arts Council

Andy Griffith Playhouse

218 Rockford Street

Downtown Cinema Theatre

142 N. Main Street

Mount Airy, NC



336-786-7998 • 800-286-6193

www.surryarts.org • surryarts@advi.net

MAYBERRY DAYS SEPT. 26-28, 2002

The Doug Dillard Band, VW Boys,
David Browning and Michael Hoover's
Memories of Elvis



*Doug Dillard
Band*

Mountains, Music, Mayberry & More!

For tourism services, call 1-800-948-0949

Mount Airy Chamber of Commerce

www.visitmayberry.com

email: tourism@visitmayberry.com

An official member of the NC Presenters Consortium!



BLUE RIDGE & BEYOND CONCERT SERIES

Fri, Oct. 11 Larry Sigmon &
Barbara Poole

Sat, Nov 9 Illrd Tyme Out

Fri, Dec 6 Emile Pandolfi

Sat, Dec 7 Big Country Bluegrass

Sat, Jan 25 Jeanette Williams Band

Fri, Jan 31 Forbidden Broadway

Sat, Feb 1 Bill Oberst, A Tribute
to Lewis Grizzard

Sat, Feb 15 Osborne Brothers

Fri, Feb 21 Healing Force

Sat, Mar 8 Seldom Scene

Fri, Apr 11 My Way

Sat, Apr 26 Marvelettes

Apr 10-11 Blue Ridge & Beyond:
A Festival of
Storytelling, Music
& Drama, with Garry
Krinsky, Michael "Badhair"
Williams, Moscow Nights & more.



Illrd Tyme Out



*Big Country
Bluegrass*



Moscow Nights

CHILDREN'S THEATRE SERIES

Tue, Nov 26 The Nutcracker

Tue, Feb 18 Alice in
Wonderland

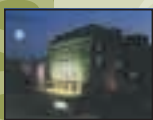
Tue, Mar 11 Comedy Pet
Theatre



Comedy Pet Theatre

www.ncpresenters.org





Carolina Theatre of Durham

309 West Morgan St., Durham, NC

919-560-3030

www.carolinatheatre.org • boxoffice@carolinatheatre.org



Ailey II

Sat, Sep 14 Pieces of a Dream
 Thu-Fri Story Salad – Stories from
 Oct 10-11 Around the World*
 Fri, Oct 25 Kirk Whalum
 Thu, Nov 7 Kathy Mattea
 Roses Tour



Nnenna Freelon

Fri-Sat, Nov 8-9 New Shanghai Circus
 Wed, Nov 20 Sarah Plain & Tall*
 Sun, Dec 1 An Evening with John Berry
 Fri, Jan 17 Ailey II
 Wed, Jan 22 Tango Buenos Aires
 Mon, Jan 27 African Tales of Earth & Sky*
 Fri, Feb 14 MOMIX: Opus Cactus
 Sat, Feb 15 Nnenna Freelon
 Mon, Feb 24 I Never Saw Another Butterfly
 Fri, Mar 7 Comedy Pet Theatre
 Mon, Mar 31 Go, Dog. Go!*

*Denotes schooltime performances only



Momix



The New Shanghai Circus

Charlotte Folk Society

Neighborhood Theatre

511 E. 36th St., Charlotte, NC

704-358-9298

www.neighborhoodtheatre.com • www.folksociety.org
spate@neighborhoodtheatre.com



Scott Ainslie

CAROLINA ROOTS SERIES

Fri John Doyle &
 Nov 22 John Williams
 Fri, Jan 17 Scott Ainslie
 Fri, Mar 7 Slate Mountain
 Ramblers/Hemlock
 Bluff Cloggers
 Sat, May 17 Mike Seeger



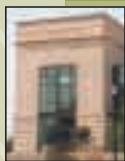
John Doyle



Mike Seeger

NC Symphony's Great Artist Series

A.J. Fletcher Opera Theater, BTI Center
2 E. South Street, Raleigh, NC



919-733-2750

www.ncsymphony.org

- Sun, Sep 15 Frederica von Stade, mezzo soprano
- Wed, Oct 16 Yefim Bronfman, piano;
Gil Shaham, violin;
Truls Mørk, cello
- Sat, Nov 16 Vladimir Feltsman, piano
- Wed, Jan 29 Heidi Grant Murphy, soprano
- Tue, Mar 4 Richard Goode, piano
- Tue, May 13 Michala Petri, recorder



Frederica von Stade



Vladimir Feltsman

Let Us Entertain You!

For TGIF specials, call 1-866-246-TGIF

Greater Raleigh Weekend Company

www.TGIFraleigh.com • visit@raleighcvb.org

An official member of the NC Presenters Consortium!

Caswell County Civic Center

536 Main Street East, Yanceyville, NC



336-694-4591

ccfta@vnet.net

- Thu, Sep 26 State Fair
- Sat, Oct 25 Russian Red Army
Chorus and Dance Ensemble
- Sun, Dec 8 A Wonderful
Life
- Sat, Feb 22 Leahy
- Sat, Mar 24 Nell Carter
with the
Greensboro
Symphony



Caswell
County
Civic
Center



Nell Carter



Red Army Chorus and Dance Ensemble

www.ncpresenters.org



33



Davie County Arts Council

Brock Performing Arts Center
622 N. Main Street, Mocksville, NC

336-751-3000

www.daviearts.org • boxoffice@daviearts.org



Doc Watson



David Holt

- Fri, Aug 16 Doc Watson & David Holt
- Mon, Sep 9 Harry the Dirty Dog
- Mon, Nov 4 Amelia Bedelia and Other Stories
- Fri, Nov 8 Laura Boosinger & Timmy Abell
- Mon, Dec 2 'Tis the Season
- Tue, Dec 10 The Clif Notes
- Thu, Jan 23 Harriet Tubman
- Mon, Jan 27 The Commedia Puss in Boots
- Sat, Feb 1 D'Vine
- Mon, Mar 10 The Ant and the Grasshopper
- Sat, Mar 29 Christine Lavin
- Thu, Apr 10 My Way



Laura Boosinger & Timmy Abell



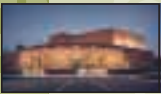
Puss in Boots



My Way



D'Vine



Richmond Community College

The Robert L. & Elizabeth S. Cole Auditorium
1042 West Hamlet Avenue, Hamlet, NC

910-582-7950

www.richmond.cc.nc.us • joannb@richmond.cc.nc.us

- Tue, Sep 24 In the Mood
- Fri, Oct 11 Oak Ridge Boys
- Tue, Dec 3 Holiday Spectacular on Ice
- Fri, Apr 25 The Marvelettes



Oak Ridge Boys



www.ncpresenters.org



Wingate University

George A. Batte, Jr. Fine Arts Center
Wingate, NC

704-233-8300

www.wingate.edu • info@wingate.edu

CONCERT SERIES

- Tue, Sep 3 Ahn Trio
- Thu, Oct 8 NC Symphony
- Thu, Nov 21 Amy Marshall Dance Company
- Thu, Dec 12 The Nutcracker
- Thu, Jan 16 Bill Bolcom & Joan Morris
- Tue, Feb 4 St. Louis Brass
- Thu, Mar 27 Zephyros Wind Quintet
- Tue, Apr 8 Chatham Baroque



Janis Ian



Habana Sax

SHOWCASE SERIES

- Thu, Sep 19 Del McCoury Band
- Thu, Nov 7 Janis Ian
- Thu, Dec 12 The Nutcracker
- Thu, Jan 23 David Burgess
- Thu, Feb 27 Habana Sax
- Thu, Mar 13 Preservation Hall Jazz Band
- Tue, Apr 29 The Marvelettes



Preservation Hall Jazz Band

"AN EVENING WITH..." DINNER THEATRE SERIES

- Fri, Sep 6 A Tribute to Lewis Grizzard
- Mon, Dec 16 An Evening with Emile Pandolfi
- Fri, Feb 14 A Valentine Evening with Melissa Walker
- Fri, Apr 4 An Evening with Christine Lavin



Christine Lavin

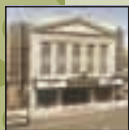
Visit North Carolina, "The State of the Arts"



Visit the North Carolina Arts Council at www.ncarts.org for a wealth of information about arts and cultural opportunities and summer arts festivals and events. For an array of NC tourism services, go to www.visitnc.com or call **1.800.VISITNC**

www.ncpresenters.org





Carolina Theatre of Greensboro

310 South Greene St., Greensboro, NC

336-333-2605

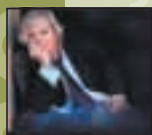
www.carolinatheatre.com
comments@carolinatheatre.com



Gregory Hines



Vassar Clements



John Cowan

- Fri, Sep 27 Neville Brothers
- Fri, Oct 4 Nnenna Freelon
- Sat, Oct 12 Keb' Mo'
- Sat, Nov 30 John Berry
- Sat, Dec 7 Emile Pandolfi
- Fri, Jan 10 George Winston
- Fri, Jan 17 Vienna Choir Boys
- Fri, Jan 24 Ralph Stanley
- Fri, Feb 7 Leon Redbone & Richie Havens
- Fri, Mar 7 Dianne Reeves
- Sat, Mar 8 John Cowan with Vassar Clements
- Sat, Mar 22 Arlo Guthrie
- Sat, Apr 26 Gregory Hines



Nnenna Freelon

THEATRE FOR FAMILIES SERIES

- Sun, Oct 13 Sleeping Beauty
- Sun, Feb 23 Just So Stories
- Sun, Mar 16 Aesop's Fables



Neville Brothers



Dianne Reeves



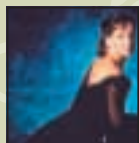
Secret Artists Series of Wake Forest University

Wait Chapel & Brendle Recital Hall
Winston-Salem, NC

336-758-5757

www.wfu.edu/secrestartists • sheltolb@wfu.edu

- Thu, Sep 5 Ahn Trio
- Sat, Oct 5 Frederica von Stade, mezzo soprano
- Sat, Feb 22 Eos Orchestra
- Thu, Apr 3 Red Priest



Frederica von Stade



Red Priest



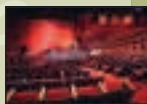
Ahn Trio

www.ncpresenters.org





PineCone
P.O. Box 28534
Raleigh, NC 27611



919-990-1900

www.pinecone.org • pinecone1@mindspring.com

STEWART THEATRE SERIES

NCSU Talley Student Center
Cates Avenue, Raleigh

919-515-1100



Keb' Mo'

Fri, Sep 20 Del McCoury Band

Thu, Oct 10 Keb' Mo'

Fri, Nov 15 Altan

Sat, Feb 1 O Sister - Women of Bluegrass

Thu, Feb 27 Karan Casey and Lunasa

Fri, Mar 28 Johnny Gimble & the Time Jumpers

Sat, Apr 12 Sonos de Mexico



Karan Casey



Lunasa

GARNER FAMILY SERIES

Free admission. For venue & time information, call:

910-990-1900

Sat, Aug 24 Dale Ann Bradley
& Coon Creek Band

Sat, Sep 14 Carnavallito

Sun, Oct 6 Crasiant

Sun, Nov 17 The Angels Shout Band

Sun, Mar 2 Khac Chi

Sun, Mar 30 Carlota Santana

Sat, May 17 Al Batten & the
Bluegrass Reunion

Sat, Jun 14 Jim Shumate & the
Sons of the Carolinas



*Dale Ann
Bradley*



Altan

Let Us Entertain You!

For TGIF specials, call 1-866-246-TGIF

Greater Raleigh Weekend Company

www.TGIFraleigh.com • visit@raleighcvb.org

An official member of the NC Presenters Consortium!

MUSIC OF THE CAROLINAS

NC Museum of History
5 East Edenton Street, Raleigh, NC

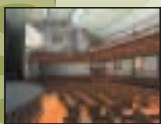
919-715-0200

*Free concerts from 3 to 4 pm, presented every
second Sunday, September through May*

*PineCone presents concerts year-round in a
variety of venues. Please call 919-990-1900
for complete schedule information.*

www.ncpresenters.org





St. Joseph's Historic Foundation, Inc.

Hayti Heritage Center

804 Old Fayetteville Street, Durham, NC

919-683-1709

www.hayti.org • hayti@hayti.org



James Ulmer

Fri-Sat Bull Durham Blues Festival
Sep 6-7
Sun, Sep 15 Shana Blake Hill, soprano



Bobby Rush

Fri, Oct 11 Cultural Odyssey:
Idris Ackamoor, Rhodessa Jones

Fri, Oct 18 The Jimmy Heath Quartet

Thu-Tue Celebrate Kwanzaa!
Dec 26-31 featuring Linda Humes

Sat, Jan 18 Raise-A-Reader
Book Fair & Reading,
Carol Boston
Weatherford



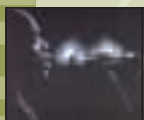
Linda Humes



Cultural Odyssey

Fri-Sun 9th Annual Black
Feb 7-9 Diaspora Film Festival

Fri, Feb 14 For Lovers Valentine's Concert
with Phil Perry



Philip Hamilton

Sat, Mar 15 The Philip Hamilton Group

UNC Greensboro

Aycock Auditorium

Corner of Spring Garden/Tate Street,
Greensboro, NC

336-334-4TIX

<http://ucls.uncg.edu> • ucls@uncg.edu



UNIVERSITY CONCERT/LECTURE SERIES 75TH ANNIVERSARY SEASON

Sun, Sep 8 Canadian Brass

Thu, Oct 10 Ballet Folklórico de Mexico

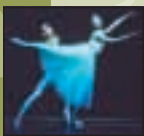
Sat, Oct 26 Shanghai Ballet

Wed, Nov 20 Mandy Patinkin

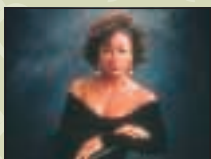
Wed, Jan 22 Chanticleer

Sat, Feb 8 The Acting Company,
American Dreams, Lost & Found

Sat, Apr 12 Denyce Graves



Shanghai Ballet



Denyce Graves



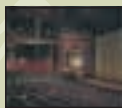
Mandy Patinkin

www.ncpresenters.org



Stevens Center

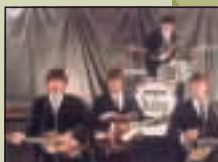
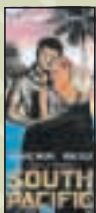
405 West Fourth St
Winston-Salem, NC



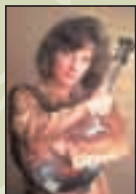
336-721-1945

www.ncarts.edu • boxoffice@ncarts.edu

- Thu, Oct 17 In The Mood
- Thu, Oct 24 1964 – The Tribute
- Tue, Dec 17 Emile Pandolfi
- Sat, Jan 11 George Winston
- Wed, Feb 5 South Pacific
- Tue, Feb 25 An Evening with Groucho
- Fri, Feb 28 Avner The Eccentric
- Sat, Mar 1 Janis Ian
- Sat, Mar 8 Rhonda Vincent & The Rage
- Tue, Mar 11 Habana Sax
- Sat, Apr 5 Christine Lavin
- Sat, Apr 12 Cirque: Dream It Live
- Tue, Apr 15 Comedy Pet Theatre
- Sat, May 24 The Platters & Shirley Alston Reeves (Shirelles' lead singer)



1964



Rhonda Vincent



An Evening with Groucho

JUST FOR KIDS SERIES

- Thu, Nov 14 Red Grammar & David Parker Together in Concert
- Fri, Jan 10 Good Driving, Amelia Bedelia and Other Story Books
- Thu, Mar 13 Theatreworks USA, Ferdinand The Bull
- Thu, May 15 Fred Garbo's Inflatable Theater



Cirque



The Platters



Fred Garbo's Inflatable Theater

www.ncpresenters.org

More events, more information & more great opportunities! You'll find direct links to almost all our member venues across NC!

www.ncpresenters.org





Johnston Community College

Paul A. Johnston Auditorium
245 College Road, Smithfield, NC

919-209-2099

www.johnstoncc.edu • mitchellken@johnstoncc.edu



Ralph Stanley

Sat, Sep 21 Ricky Skaggs &
Kentucky
Thunder

Fri, Oct 11 Boots
Randolph

Wed-Sat
Nov 20-23 Smokey
Joe's Café



Chinese Golden Dragon Acrobats

Fri, Jan 17 Chinese Golden Dragon Acrobats

Sat, Jan 25 Ralph Stanley &
His Clinch Mountain Boys

Sat, Feb 22 Gary Chapman

Sat, Apr 12 Sherman Hemsley & Friends



Gary Chapman

OFF-SERIES SPECIAL EVENT

Sat, Mar 15 David Allan Coe



Ricky Skaggs & Kentucky Thunder



Town of Cary

Herbert C. Young Community Center
404 N. Academy Street, Cary, NC

919-469-4061

www.townofcary.org

Sat, Oct 5 Rhythm & Brass

Sat, Nov 2 Quintango

Wed, Feb 5 Riders in the Sky

Sun, Feb 23 An Evening
with Groucho



Rhythm & Brass



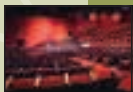
Quintango

www.ncpresenters.org



NCSU Center Stage

Stewart Theatre
Talley Student Center
2610 Cates Ave, Raleigh, NC



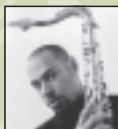
919-515-1100

www.ncsu.edu/centerstage • centerstage@ncsu.edu

Fri, Oct 18 Joshua Redman

Tue-Wed, Oct 29-30 Teatro Hugo & Ines

Fri, Nov 1 Burhan Öçal and
The Istanbul
Oriental Ensemble



Joshua Redman



Habib Koité

Wed
Nov 13 Shenandoah
Shakespeare Express,
The Merry Wives
of Windsor

Thu
Nov 14 Shenandoah
Shakespeare Express,
Love's Labour's Lost



*Teatro Hugo
& Ines*

Wed, Jan 29 Rennie Harris
Puremovement

Wed, Feb 5 Aquila Theatre Company,
The Importance of Being Earnest

Fri, Feb 28 Habib Koité & Bamada

Wed, Mar 19 Eileen Ivers

Fri, Apr 11 Patricia Barber

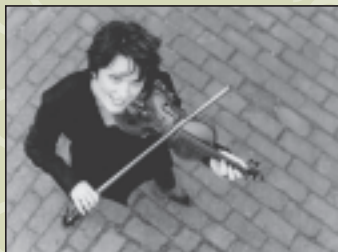


Patricia Barber

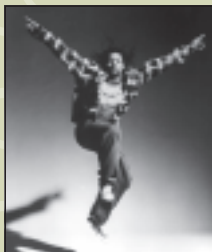
KIDSTUFF SERIES

Sun, Nov 24 Cathy Fink &
Marcy Marxer

Sun, Mar 23 Theatreworks USA,
Ferdinand the Bull



Eileen Ivers



Rennie Harris Puremovement

Let Us Entertain You!

For TGIF specials, call 1-866-246-TGIF

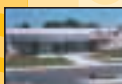
Greater Raleigh Weekend Company

www.TGIFraleigh.com • visit@raleighcvb.org

An official member of the NC Presenters Consortium!

www.ncpresenters.org





Sampson CenterStage Series

Sampson County Agri-Exposition Center
414 Warsaw Road, Clinton, NC

910-592-7200 • 910-592-6451

www.sampsonexpocenter.com • rjordan@intrstar.net



Lee Greenwood

SAMPSON CENTERSTAGE PERFORMING ARTS SERIES

Sat, Oct 12 On the Wings of Freedom:
An American Portrait

Thu, Nov 21 The Nutcracker

Sat, Nov 23 Lee Greenwood,
A Tennessee
Christmas
(2 performances)



Ricky Skaggs

Fri, Jan 17 Ricky Skaggs &
Kentucky Thunder

Sat, Feb 15 Freddy Cole & His Quartet

Sat, Mar 29 NC Youth
Tap Ensemble



The Ennis Sisters

Sat, Apr 26 The Ennis Sisters

Sat, May 10 The Marvelettes



Freddy Cole



NC Youth Tap Ensemble

CLASS ACTS—SAMPSON CENTERSTAGE FOR STUDENTS

Thu, Nov 21 The Nutcracker

Wed, Mar 26 Harry the Dirty Dog

Wed, Mar 26 New Kid

Fri, Mar 28 NC Youth Tap Ensemble



Boykin Center

Arts Council of Wilson

108 W Nash Street, Wilson, NC

252-291-4329

www.wilsonarts.com • acwoutreach@simflex.com

Sat, Oct 5 1964: The Tribute

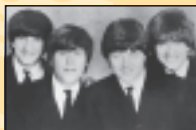
Sat, Dec 14 Emile Pandolfi
at Christmas

Mon, Jan 20 African American
Dance Ensemble

Sat, Feb 1 Forbidden
Broadway

Fri, Mar 14 Preservation
Hall Jazz Band

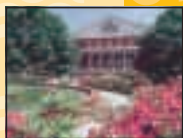
Sat, Apr 12 Ailey II



1964

East Carolina University

Wright Auditorium
212 Wright Circle, Greenville, NC



800-ECU-ARTS

www.ecu.edu/ecuarts • ecuarts@mail.ecu.edu

S. RUDOLPH ALEXANDER PERFORMING ARTS SERIES

Thu, Sep 26 The Parsons Dance Company

Fri, Oct 4 ECU Jazz Ensemble
(Family Weekend)

Fri, Oct 18 Paul Winter Consort

Thu, Oct 29 Three Mo' Tenors

Thu Nov 7 Western Opera Theatre,
La Boheme

Fri Nov 15 Olga Kern, Van Cliburn
Gold Medalist

Sat Feb 15 Hungarian National
Philharmonic Orchestra

Sat Mar 22 American Repertory
Dance Company

Wed, Apr 2 The Baltimore Consort

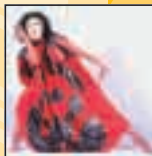
Fri, Apr 11 Dianne Reeves



Paul Winter



Dianne Reeves



American Repertory
Dance Company



Three Mo'
Tenors



Toying with
Science

FAMILY FARE SERIES

Sat, Oct 26 The Song of Mulan

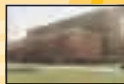
Sat, Nov 23 Little Red Riding Hood

Sat, Jan 25 Dinosaurs

Sat, Mar 1 Toying with Science

College of the Albemarle

COA Community Center Auditorium
1208 N. Road Street, Elizabeth City, NC



800-335-9050

www.albemarle.edu/acadaff/finearts/schedule.htm
aswain@albemarle.edu

Thu, Nov 14 My Way,
Sinatra Tribute

Mon, Dec 2 A Christmas
Carol

Thu, Feb 27 Comedy Pet
Theatre

Sat, Apr 26 Kathy Mattea

Thu, May 1 The Marvelettes



A Christmas Carol



The Marvelettes

www.ncrepresenters.org





The Dunn Center

NC Wesleyan College

3400 N Wesleyan Blvd, Rocky Mount, NC

800-303-5097 • 252-985-5197

www.dunncenter.com • boxoffice@ncwc.edu



An Evening with Groucho

MAINSTAGE SERIES

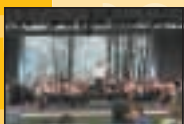
- Sat, Oct 19 Steve Reid's Dream Scapes
- Sat, Nov 2 Rhonda Vincent and the Rage
- Fri, Nov 15 An Evening with Groucho
- Fri, Dec 6 A Wonderful Life
- Fri, Jan 17 Michael Andrew & Swingerhead
- Sat, Feb 15 Porgy & Bess
- Fri, Mar 14 Tony Kenny's Ireland and the Dublin City Dancers
- Sat, Apr 12 Wood & Strings Puppet Theatre
- Thu, May 8 The Marvelettes



Porgy & Bess

CHICK-FIL-A "SILLY SATURDAYS"

- Sat, Sep 21 Page Turner Adventures, The Silly Mixed-Up Fairy Tale
- Sat, Nov 9 Roger Day, Ready to Fly
- Sat, Mar 1 Jim Jackson, World-Class Clown
- Sat, May 24 Billy Jonas and his One-Man Band



Roanoke Island Festival Park

1 Festival Park, Manteo, NC

252-475-1500

www.roanokeisland.com • rfp.information@ncmail.net

ROANOKE ISLAND FESTIVAL PARK & THE NC SCHOOL OF THE ARTS PRESENTS ILLUMINATIONS SUMMER ARTS SERIES 2003

June 24 – August 9

- 10:30am, Tue-Fri Children's performances in the Film Theatre
- 2 pm, Tue-Fri Music in the Art Gallery
- 8 pm, Tue-Sat Drama, music, dance & film in the Pavilion by the Roanoke Sound

Detailed schedule on website



Thalian Hall Main Attractions

310 Chestnut St., Wilmington, NC

800-523-2820 • 910-343-3664

www.thalianhall.com • friends@thalianhall.com



- Sun, Oct 27 Shanghai Ballet, Coppelia
- Fri, Nov 1 Quintango
- Sat, Nov 16 An Evening with Groucho
- Fri-Sun Nov 22-24 The Nutcracker (four performances)
- Fri, Dec 6 Broadway Love Stories
- Sat Jan 18 Ricky Skaggs (two performances)
- Sat Jan 25 Pied Piper Theatre (two performances)
- Fri, Jan 31 Lorin Hollander, piano
- Thu, Feb 27 Janis Ian
- Thu, Mar 6 Habana Sax
- Sat, Mar 8 Porgy and Bess (two performances)
- Sun Mar 9 Comedy Pet Theatre (two performances)
- Sun Mar 16 Puss in Boots (two performances)
- Fri, Mar 21 Altan
- Sat, Apr 12 Dianne Reeves (two performances)
- Fri, Apr 25 The Ennis Sisters
- Fri, May 2 The Marvelettes



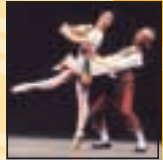
Janis Ian



Lorin Hollander



Comedy Pet Theatre



Shanghai Ballet



Quintango



Broadway Love Stories



Altan

Pamlico Musical Society Oriental, NC

252-249-3079

www.pamlicomusic.org • info@pamlicomusic.org

- Fri, Nov 8 Lois Deloatch
- Sat, Dec 7 Middle Voices (viola, clarinet, piano)
- Sun, Jan 12 Ciompi Quartet
- Sat, Feb 15 Shady Grove Bluegrass Band
- Wed, Apr 30 Christine Lavin



Ciompi Quartet



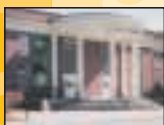
Christine Lavin



Shady Grove Band

www.ncpresenters.org





UNC Wilmington Arts in Action

Kenan Auditorium

601 S. College Road, Wilmington, NC

800-732-3643 • 910-962-3500

www.uncw.edu/stuaff/arts • artsinaction@uncw.edu

Mon, Oct 7 Chucho Valdés

Mon, Oct 14 Keb' Mo'

Sat, Nov 9 Koresh Dance Company

Sat, Jan 18 Bolcom & Morris

Thu, Jan 30 NC Jazz Festival Preview

Tue, Mar 18 Eileen Ivers

Fri, Apr 11 David Sedaris



David Sedaris



Eileen Ivers



Chucho Valdés



Koresh Dance Company

Outer Banks Forum for the Lively Arts

Kitty Hawk School

Dogwood Trail, Kitty Hawk, NC

252-202-9732

meyer@beachlink.com • www.outerbanksforum.org

Sat, Sep 7 Alison Brown Quartet

Sun, Oct 6 1964 - The Tribute

Sun, Nov 17 An Evening with Groucho

Sun, Dec 15 NC Jazz Repertory Orchestra

Sun, Mar 9 Habana Sax

Sun, Apr 6 Chatham Baroque



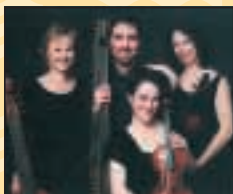
1964



outer banks
FORUM
For the Lively Arts



Alison Brown



Chatham Baroque

www.ncpresenters.org





ON STAGE IN NORTH CAROLINA

North Carolina Presenters Consortium, Inc. Executive Board 2002-2003

Perry Mixer
Appalachian State University
Boone, NC

Lyman Collins
Div. of Cultural Arts
Town of Cary, NC

Chris Dunn
Arts Council of Moore County
Southern Pines, NC

John Ellis
Diana Wortham Theatre
Asheville, NC

Beverly Meek
Duke University
Durham, NC

Cindy Calabrese
Porter Center
Brevard, NC

Shannon Hooker
UNC-Wilmington
Wilmington, NC

Louisa Hart
High Point Theatre
High Point, NC

Presenting Liaison,
NC Arts Council
Vicki Vitiello, Raleigh, NC

NCPC Administration
goingbarefoot • inc., Durham, NC

NCPC Webmaster
Pete Montaldi,
highsouth webworks, Boone, NC
arky@highsouth.com

Design & Production
Wordwright
Communications, Inc.
Wilmington, NC
Hillary Edgin, designer

Editor
Stephen Barefoot,
goingbarefoot • inc.
Durham, NC

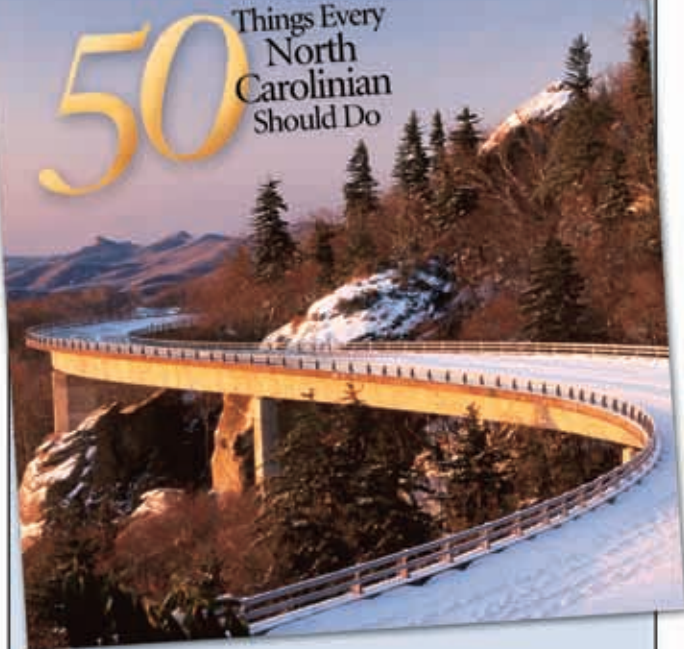
Our State

North Carolina

about
the NC
to

FEBRUARY 2017 \$7.00

50 Things Every
North
Carolinian
Should Do



Our State

North Carolina

*A magazine of North Carolina
travel, history, and folklore.*

For subscription information
(800) 948-1409 • www.ourstate.com

In conjunction with the North Carolina Presenters Consortium, *Our State* features a monthly listing of exciting professional arts and entertainment events occurring at NCPC member venues throughout North Carolina.
www.ncpresenters.org

